

# 17<sup>th</sup> Technical Training Series



**April 3-6, 2017 · Long Beach Hyatt**  
200 South Pine Avenue · Long Beach, California, 90802



# The Potential Impacts of Physical Contaminants in Compostable Material

17<sup>th</sup> Technical Training Series

Long Beach Hyatt Regency

Long Beach, California

April 6, 2017

Carley Bartlett

Department of Resources Recycling and Recovery (CalRecycle)

# CalRecycle Compostable Material Requirements

- ✓ **Maximum Metal Concentrations**
- ✓ **Pathogen Reduction**
- ✓ **Physical Contaminants (2018)**

# Physical Contaminants – CalRecycle Concerns



## Safety

- Glass
- Metals

## Nuisance Issues

- Litter
- Odor
- Dust

# Physical Contaminants – Water Board Concerns



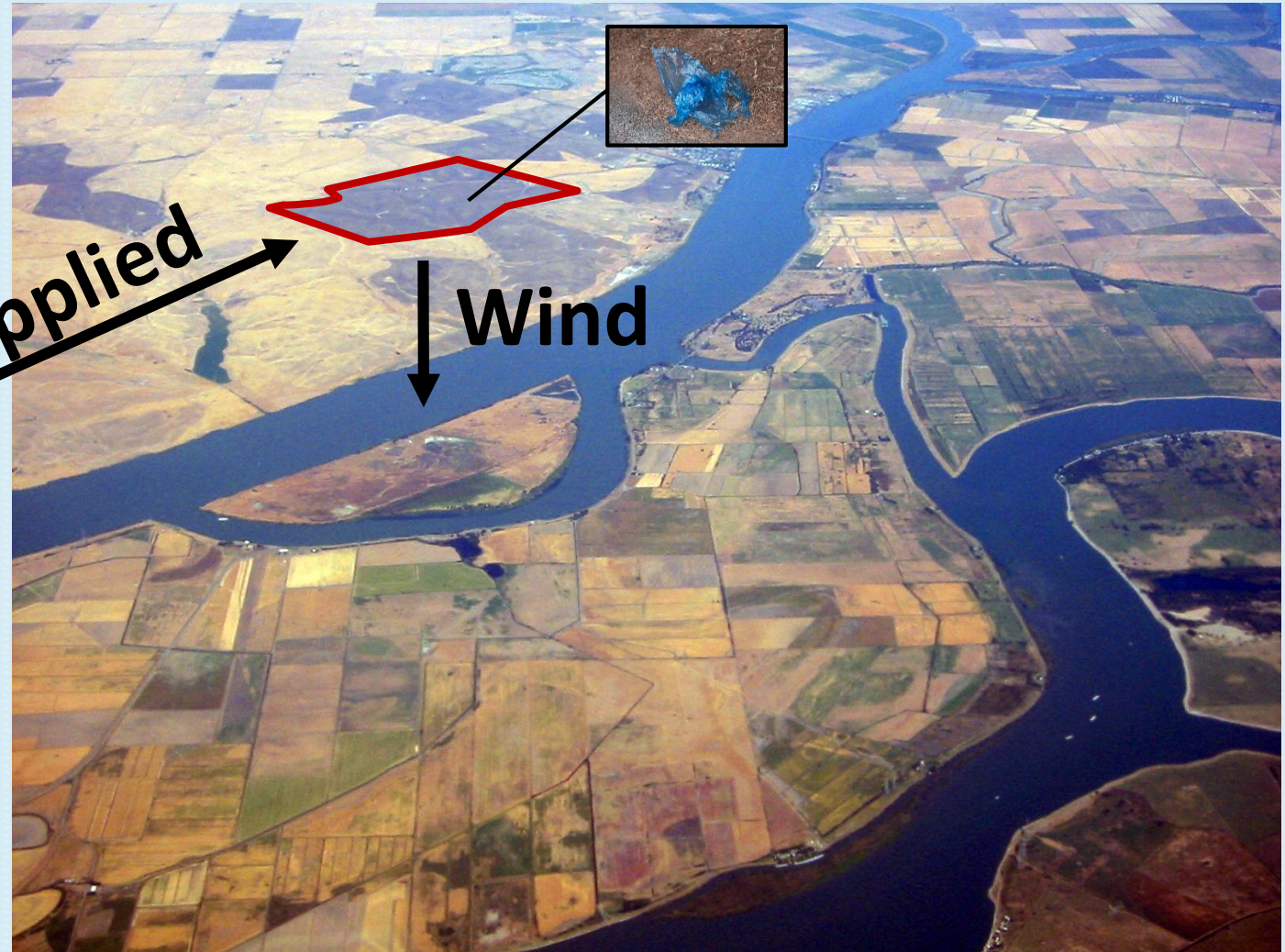
# Physical Contaminants - Land Application and Litter



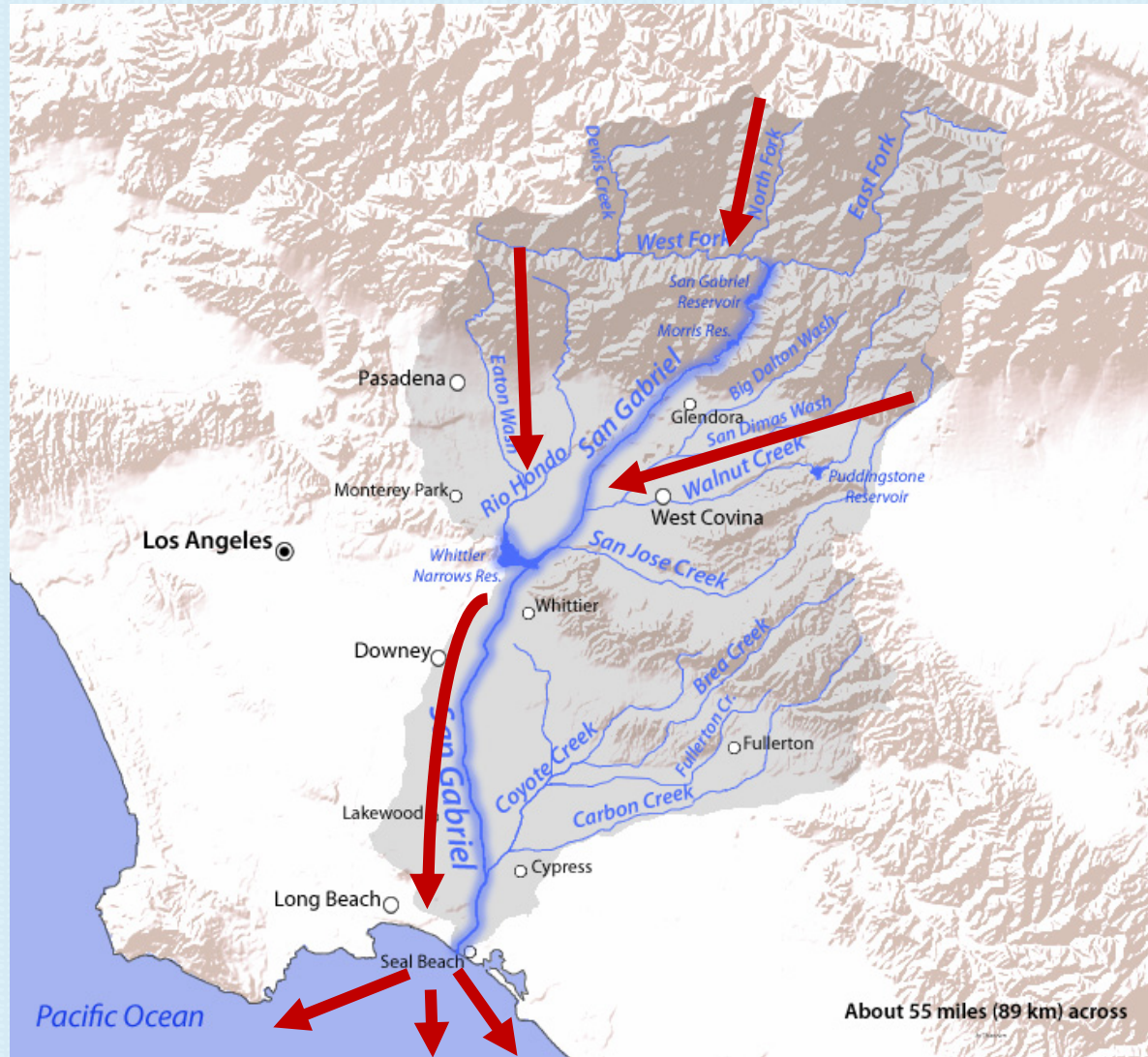
# How Do Plastics Enter Waterways?



**Land Applied**



# Waterways Can Transport Plastics

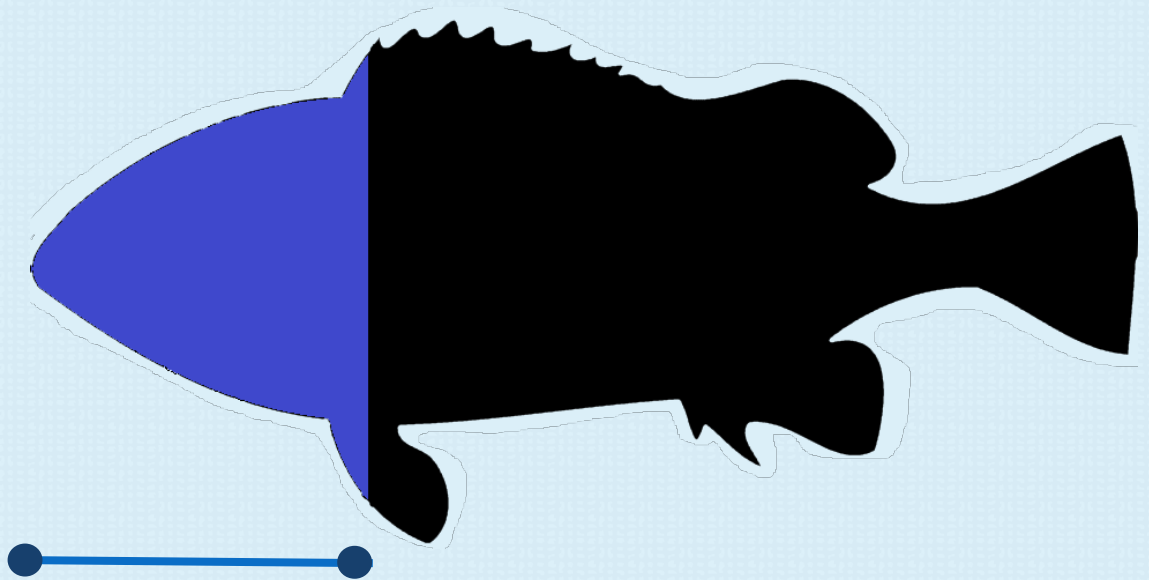




# Marine Fish Are Ingesting Plastics

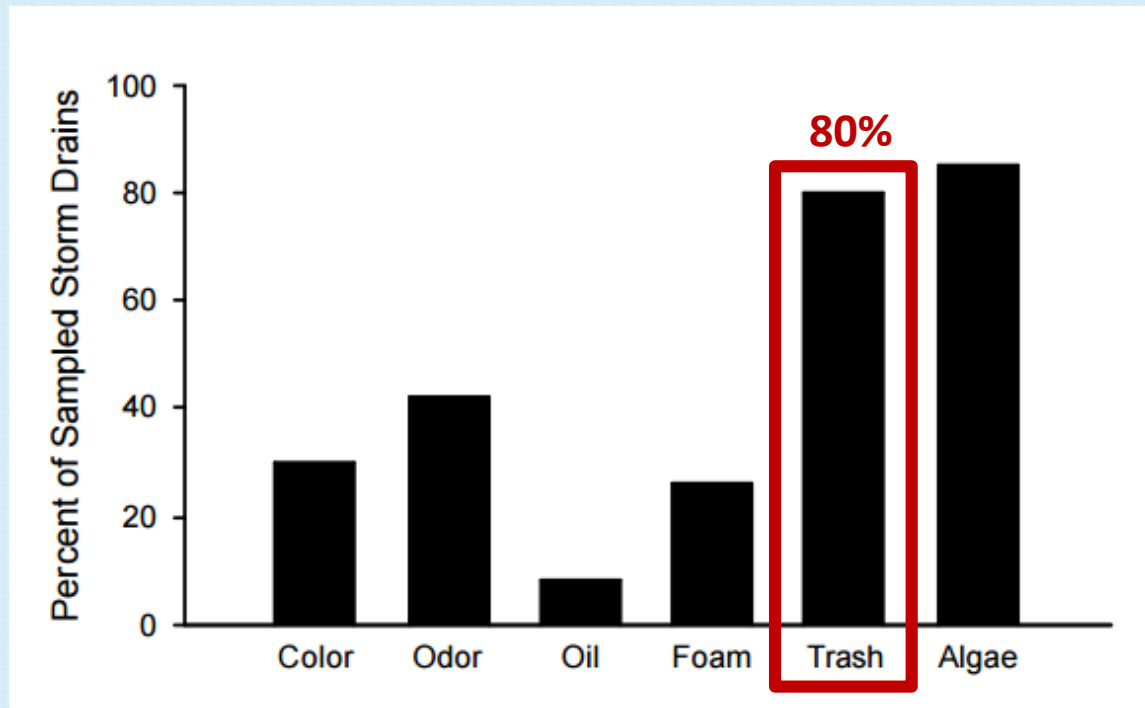


(Rochman et al. 2015) and (Lusher et al. 2013)



25-33% of individual fish ingested debris consisting plastics and textile fibers

# What is Being Done to Remove Plastics from Waterways?



Characterization of water quality in the Los Angeles River  
(Ackerman et al. 2003)

- Los Angeles waterways listed as impaired through Clean Water Act due to pollutants, including trash
- Required to create trash Total Maximum Daily Load (trash TMDL) or “pollution budget”
- Trash TMDL enacted to improve water quality

# Statewide “Trash Amendments” Approved in 2016

Statewide Amendments to Ocean Plan and Inland Surface Waters, Enclosed Bays, and Estuaries (ISWEBE) Plan:

- Create water quality objective for trash
- Establish a prohibition on the discharge of trash
- Create monitoring and reporting requirements



# Physical Contaminant Regulations – Public Health and Safety and the Environment

- ✓ Maximum Metal Concentrations
- ✓ Pathogen Reduction

✓ **Physical Contaminants (2018)**

